

Professional PLUS

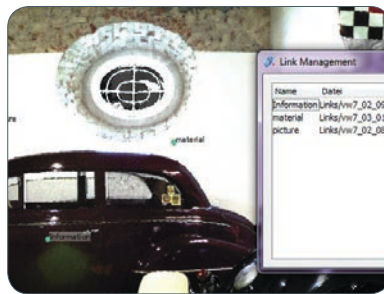


Z+F LaserControl Professional PLUS gives extended functions for registration, additional data visualisation and project management tools. Both, from sensitive Cloud-to-Cloud and Plane-to-Plane registration decrease dramatically the need of targets. Saving time in the field and in the office are the striking benefits of these future orientated registration tools. Furthermore fly throughs can be generated, simulated and saved. Your static imagery can be rectified and printed to scale. The relocation of misplaced data with the mirror filter is the right tool to bring your point clouds to perfection. Finally the linktool offers you best usability for project management.



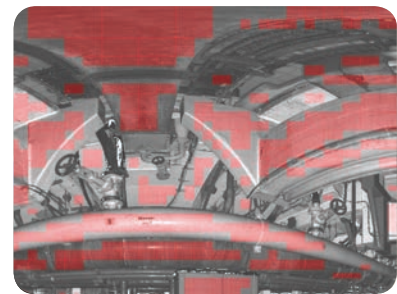
Orthophotos

Orthophotographic views are easily set with this feature. Selected points are projected onto a user defined plane. This enables you to generate orthogonal views and scaled floor plans. The graphic results can be exported into various file formats.



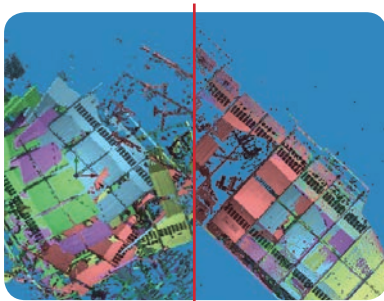
Linktool

With the link-tool it is possible to link external files like pictures, documents etc. at any position of the scan. These files will also be added to the project-structure and vice versa all information of a scan-project can be digitally added to the scan forming one unit. In addition to that it is possible to add notes into the scan.



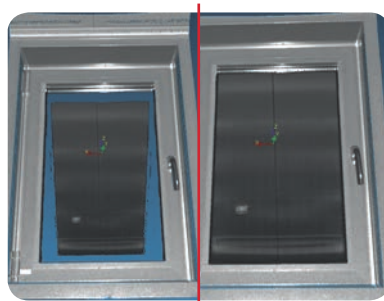
Plane-to-Plane Registration*

The algorithm uses identical planes, and if necessary, points in the overlapping range of two adjacent scans. The accessible neighbourhood accuracy is at submillimeter scale. Automatic plane detection is done separately for each scan; a matching algorithm finds plane identities. Registration is divided into pairwise transformations and a concluding block adjustment.



Cloud-to-Cloud Registration

The user will provide an approximate alignment through preregistration stage, either manually in 3D or with a simple mouse-click within the 2D environment. In just one more step the automatic registration is completed.



Mirror Filter

In some cases, scans may contain misplaced data due to the presence of highly reflecting surfaces, e.g. thermo-insulated windows, glass or mirrors. This tool allows the relocation of these points onto the mirror plane!



Video-Plugin

This plugin allows to fly through a point cloud in 3D view. The selected trajectory can be stored and reloaded even after manipulation of the current data set.

* optional feature